

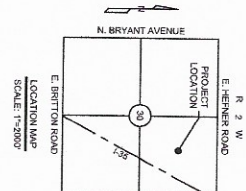


Ex. 1

Subject



**PROPERTY DESCRIPTION**  
 A tract of land being a part of the Northwest Quarter (NE1/4) of Section Thirty (30), Township Thirteen (13) North, Range Two (2) West, Oklahoma County, Oklahoma, being more particularly described as follows:  
 COMMENCEMENT at the Northwest (NW) Corner of said Northwest Quarter (NE1/4);  
 THENCE South 89°20'17" East, along with the North line of said NE1/4, a distance of 250.00 feet;  
 THENCE South 89°20'17" East, parallel with and 250.00 feet east of the West line of said NE1/4, a distance of 100.00 feet to the NW Corner of said NE1/4;  
 THENCE North 89°20'17" East, a distance of 614.91 feet;  
 THENCE South 78°59'07" East, a distance of 282.22 feet;  
 THENCE South 82°24'02" East, a distance of 346.80 feet;  
 THENCE South 37°17'27" East, a distance of 391.89 feet;  
 THENCE South 31°56'18" East, a distance of 204.48 feet;  
 THENCE South 67°17'09" East, a distance of 150.89 feet;  
 THENCE South 26°37'29" East, a distance of 78.24 feet;  
 THENCE South 11°44'17" East, a distance of 631.12 feet;  
 THENCE South 67°17'27" West, a distance of 60.65 feet;  
 THENCE South 09°40'10" West, a distance of 61.52 feet to a point on the West line of said NE1/4;  
 THENCE South 27°12'23" West, along with and Westward 1700 feet of said NE1/4, a distance of 1,210.33 feet;  
 THENCE North 67°29'47" West, starting east Thence 1000 feet, a distance of 1,000.00 feet;  
 THENCE North 07°09'57" West, a distance of 616.44 feet parallel with and 250.00 feet east of the West line of said NE1/4, to the POINT OF BEGINNING.  
 Containing 1,869,425 square feet or 39.0166 acres, more or less.  
 Basis of bearing: said point is established by survey done above Oklahoma State Plane North Zone North, Range Two (2) West having a bearing of North 39°20'17" East.



ONE CALL UTILITY LOCATION NUMBER  
 1-800-52-4543  
 The number 1-800-52-4543 is the number of an electronic database. Consult this number and the number of the project location to find the project location.

FUSION INDUSTRIAL PARK

**FUSION INDUSTRIAL PARK**  
 OKLAHOMA CITY, OKLAHOMA COUNTY, OKLAHOMA

**OVERALL SITE PLAN**

Johnson & Associates, Inc.  
 1 E. Sheridan Ave., Suite 200  
 Oklahoma City, OK 73104  
 (405) 233-8875 Fax (405) 233-8876  
 Website: www.ja-inc.com  
 Office: 1000 North Lincoln Blvd. Suite 1000  
 • ENGINEERS • SURVEYORS • PLANNERS •

NO.	REVISIONS DESCRIPTION	DATE

**EX1**

SHEET NUMBER

DATE: 06/07/2011

SCALE: 1"=200'

CREATED BY: [Name]

APPROVED BY: [Name]

THESE PLANS WERE PREPARED BY THE ENGINEER OR SURVEYOR AND ARE NOT TO BE USED FOR ANY OTHER PURPOSE WITHOUT THE WRITTEN CONSENT OF THE ENGINEER OR SURVEYOR.